



MASARYK UNIVERSITY

SUPPORT CENTRE FOR STUDENTS WITH SPECIAL NEEDS

STTR Services at Masaryk University Brno, Czech Republic

Christoph Damm, Petr Peňáz

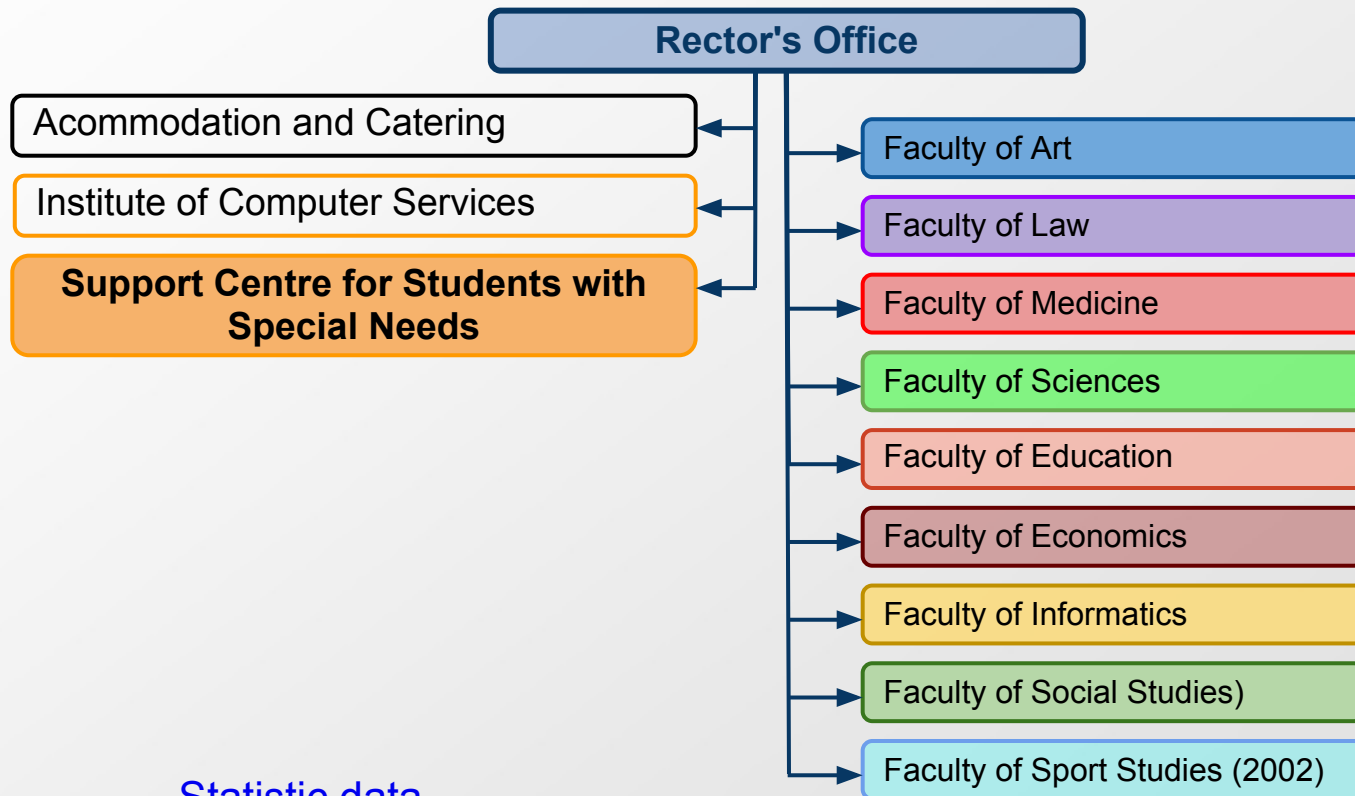
Brno, 11 February 2013

Masaryk University

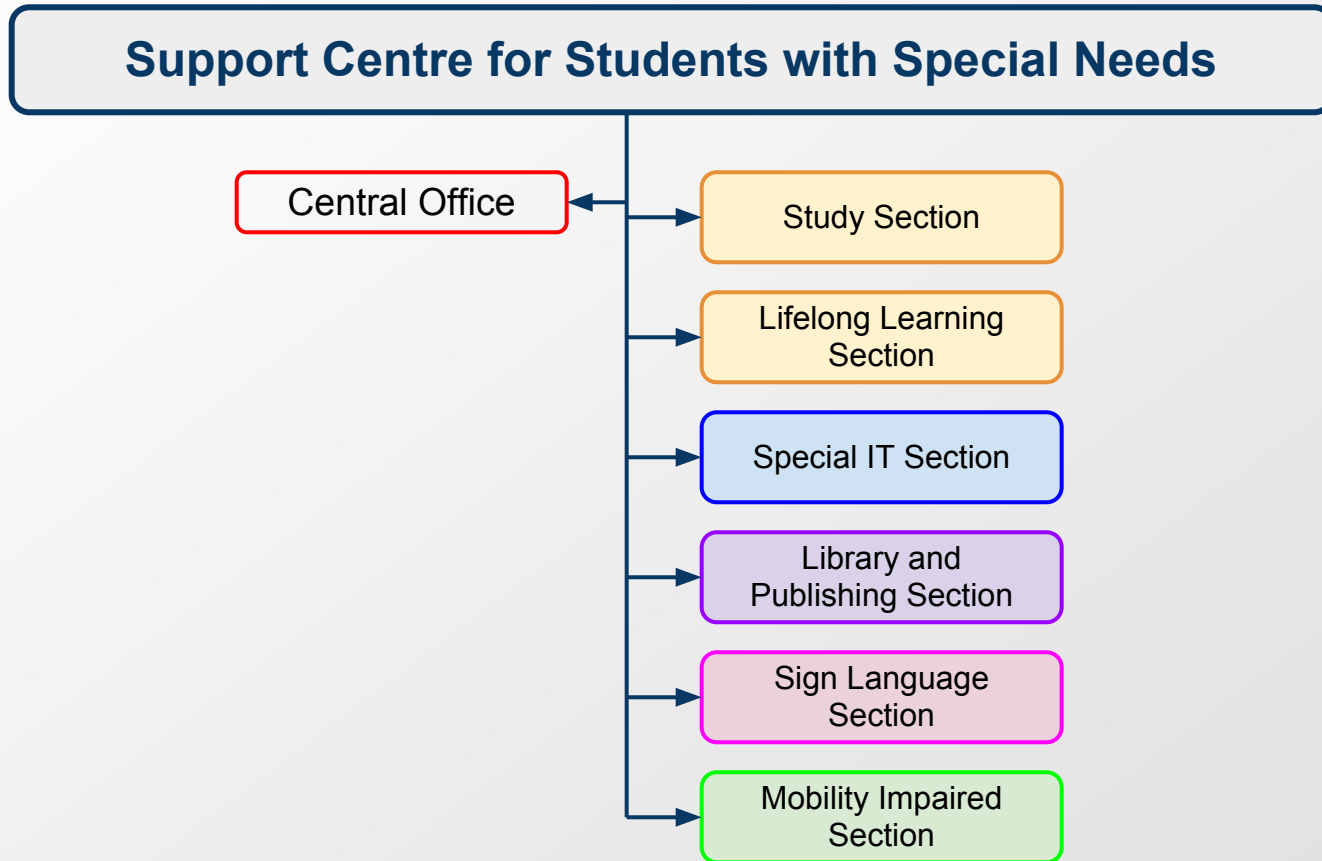
- Founded: 1919
- Staff: 4700
- Faculties: 9
- Students: 45000



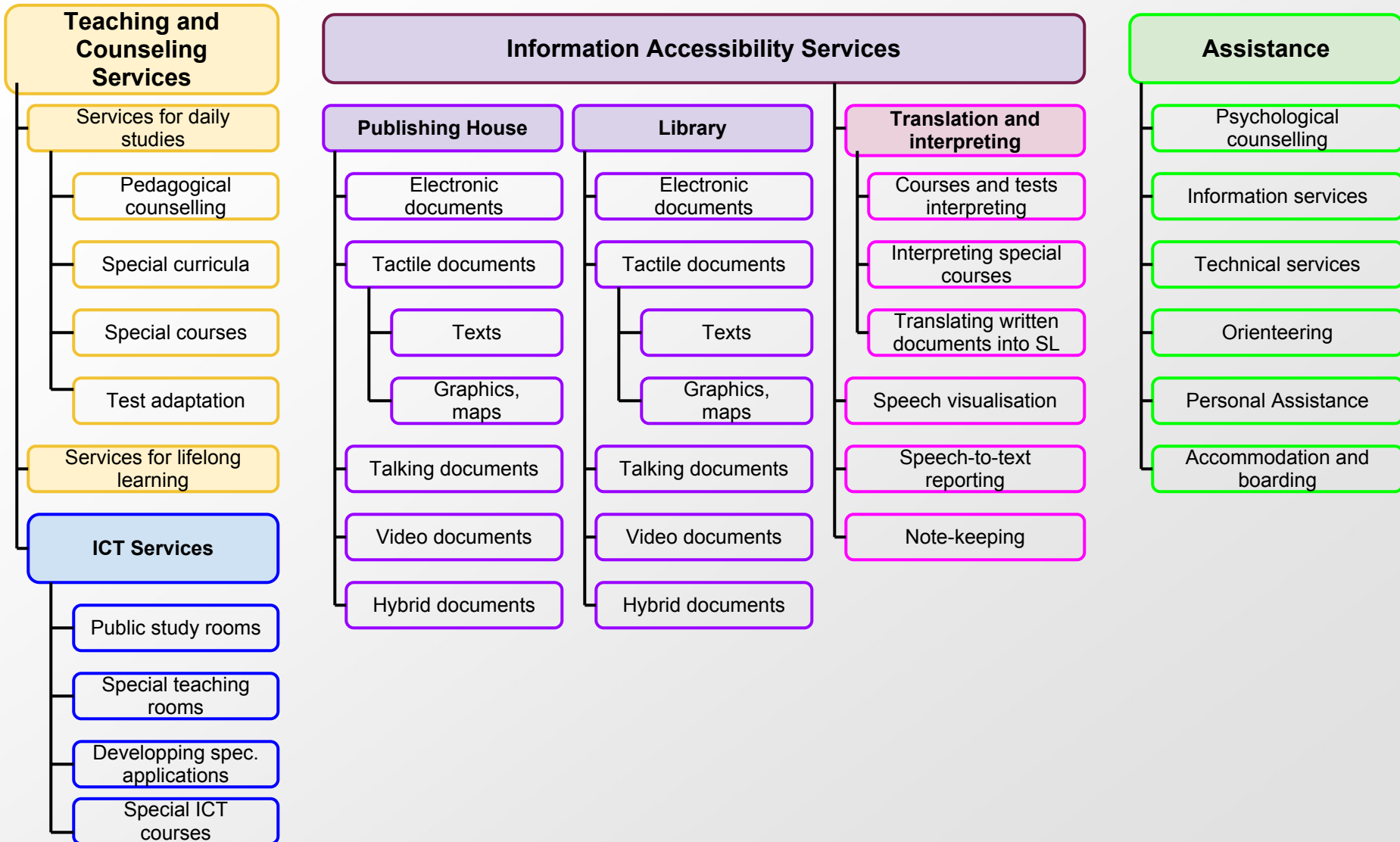
Masaryk University



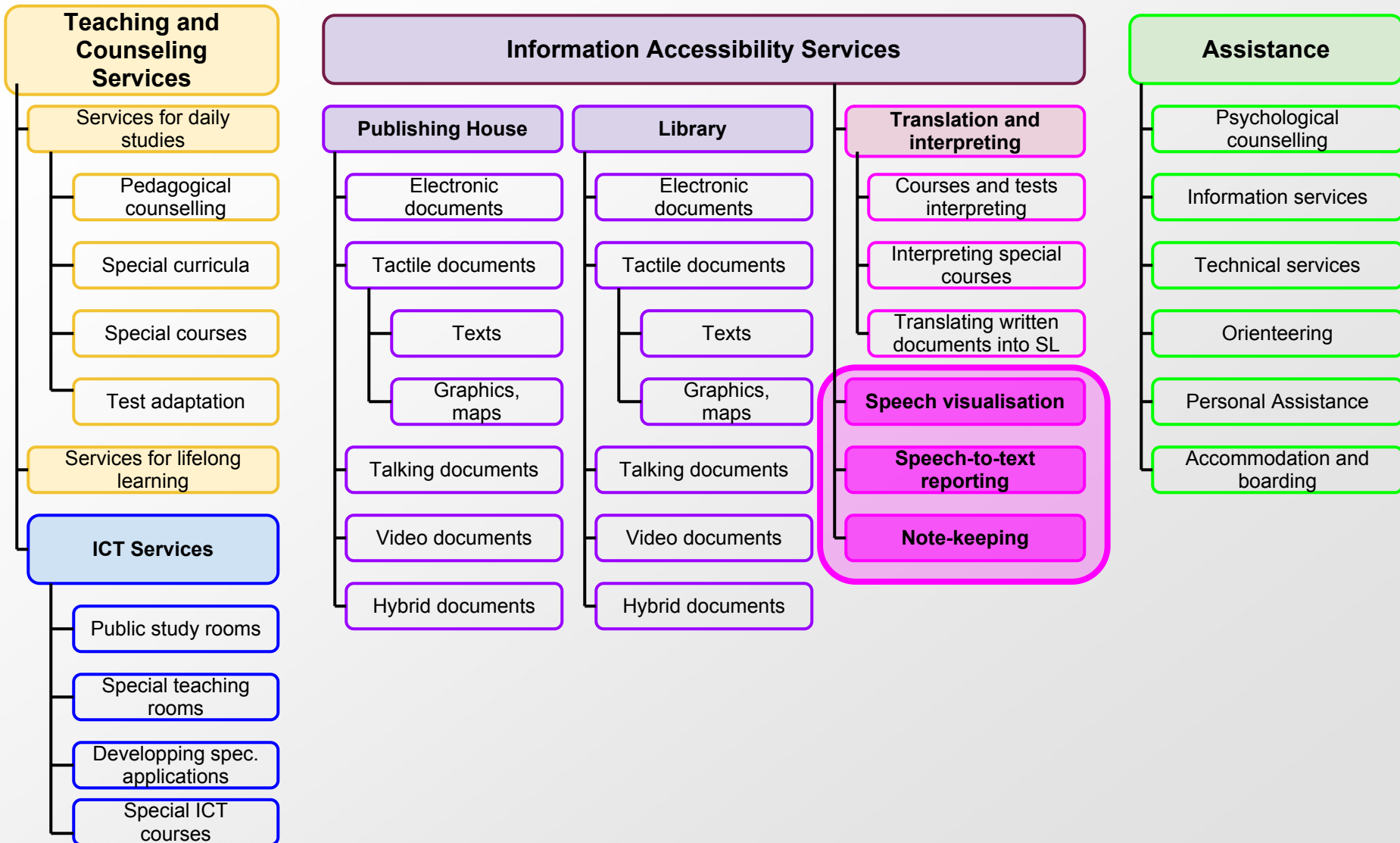
[Statistic data](#)



[Statistic data](#)



I. Disability services at MU



I. Disability services at MU



II. MU specific approach



Specificity of the MU approach

- MU assumes more responsibility than required by law:
 - Rector's directive on study and examination rules for persons with special needs
 - Rector's directive on accessibility of information sources for persons with special needs
 - **Rector's directive on sign language and STTR services**
- disability is considered natural constitutive part on both sides of the academic community (staff and students)
- any member of the academic community (and any applicant) is required to make a declaration on his/her needs, standard needs are identified as lack of specific needs, not viceversa

Specificity of the MU approach

- accessibility in teaching is the primary responsibility of the teacher (in co-operation with the support centre), including methods and skills specific for a particular disability (braille, sign)
- accessibility in other cases is responsibility of the university management (in co-operation with the support centre)
- formal integration with no respect to specific skills and methods is not an integration, therefore a specific training is introduced whenever considered necessary by the teacher (in co-operation with the center)
- modification in time and form is always possible, never in content (but oral communication is not to be replaced by written and viceversa)

III. Services for the hearing impaired



Services for the hearing impaired

- counselling and tutorship to get oriented in the programmes
- dispatching
 - sign interpreters & translators,
 - STT reporters & notekeepers
- translating key documents into the Czech Sign Language
- preparing an electronic thesaurus of the Czech Sign Language including special terms
- ensuring all equipment (both hardware and software) necessary to participate in the courses
- special IT and language courses using specific equipment
- teaching individually all in small group whenever necessary
- organizing special sport activities and excursions with the sign language guiding

Typology of the real-time services for the hearing impaired

(A) Services provided according to the Czech Deaf Communication Act

1. Interpreting (*Czech ⇌ Czech Sign Language*)

2. Visualising

- speech-to-sign transcription (*spoken Czech ⇌ signed Czech*)
- speech-to-text transcription (*spoken Czech ⇌ written Czech*)
 - visual report (real time, not stored)
 - registering report (real time, stored)

(B) Services provided to both deaf and hearing persons

3. Note taking

- full record (includes all information, study material)
- summary (main points and differences)

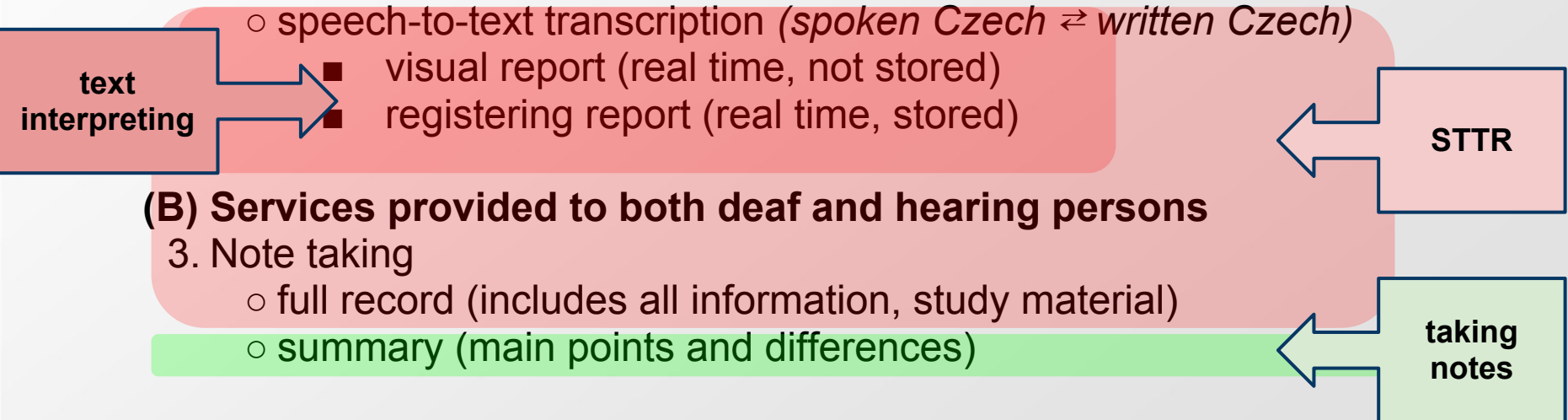
Typology of the real-time services for the hearing impaired

(A) Services provided according to the Czech Deaf Communication Act

1. Interpreting (*Czech ⇌ Czech Sign Language*)

2. Visualising

- speech-to-sign transcription (*spoken Czech ⇌ signed Czech*)
- speech-to-lips transcription (*spoken Czech ⇌ visually articulated Czech*)
- speech-to-text transcription (*spoken Czech ⇌ written Czech*)



(B) Services provided to both deaf and hearing persons

3. Note taking

- full record (includes all information, study material)
- summary (main points and differences)

Typology of the real-time services for the hearing impaired

(A) Services provided according to the Czech Deaf Communication Act

1. Interpreting (*Czech ⇌ Czech Sign Language*)

2. Visualising

- speech-to-sign transcription (*spoken Czech ⇌ signed Czech*)
- speech-to-text transcription (*spoken Czech ⇌ written Czech*)
 - visual report (real time, not stored)
 - registering report (real time, stored)

education
organised
by Chamber
of
Interpreters

education
organised
by MU

(B) Services provided to both deaf and hearing persons

3. Note taking

- full record (includes all information, study material)
- summary (main points and differences)

Dispatching transcription services

- 89 students with hearing disability (December 2011, see chart 1)
- 5 deaf teachers
- 60 users of transcription services according to the Czech Deaf Communication Act (see chart 2)
- dispatching services:
 - staff: 30 STT reporters, 3 dispatchers
 - technology:
 - Polygraph - a wireless system for real-time STTR distribution,
 - 15 laptops (size 15,6"),
 - 28 iPads (version 1, 2),
 - 1 large screen (size 42")
 - scheduled courses for registered students: service provided automatically whenever a disabled person is registered
 - other events: on-demand service (upon request from teachers and students)

Professional training for STTRs

- annual competition for STTRs' posts includes:
 - tests of typing speed and accuracy,
 - communication skills and general knowledge
- training courses
 - workshops for current transcribers (a training course pilot)
 - training course
- regular current STTRs certifications
 - system for testing current transcribers (annually, same criteria)

Educational programme for the Czech STT reporters

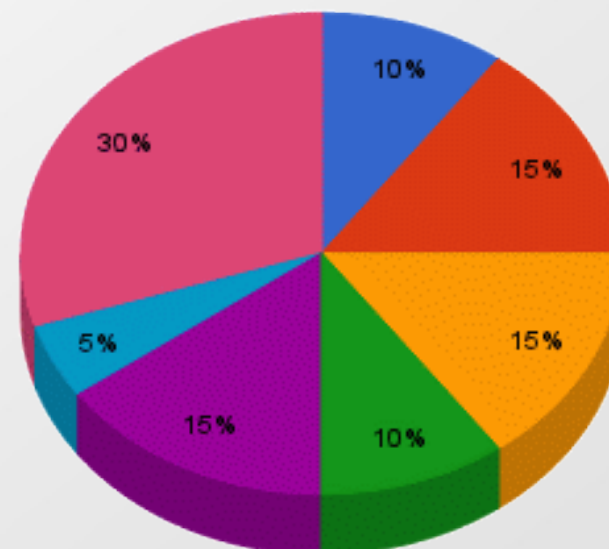
- part of the Expln project (European Social Fund, Education for Competitiveness Operational Programme)
- launched at Masaryk University in 2012, in cooperation with:
 - the Czech Union of the Deaf
 - Interinfo (company running ZAV, a typewriting e-school)
- started in Winter 2012



Structure of the educational programme

- Subjects:

- Introduction, ethics, typology of services
- Language and communication skills
- Deaf culture and psychological background
- Formal principles of transcription
- Technical aspects of transcription
- Training in virtual model situations
- Practical training of transcription





UNIVERSAL LEARNING DESIGN BRNO, 12 - 15 FEBRUARY 2013

Contact    

Conference | Programme | Venue | Registration and Fees | Accommodation | News |

Sign in |

Registration...

Key Deadlines

Conference Fees

Cancellation
Conditions

Key Deadlines

For Contributions

Registration start: 1 September 2012
Deadline for conference paper abstracts: 1 December 2012
Preliminary programme: 6 January 2013
Deadline for finalized papers in a printable format: 1 January 2013
Deadline for special workshops, company presentations and poster announcements: 1 January 2013

For Participation

Registration begins on 1 September 2012
Deadline for Early Bird Registration: 31 October 2012
Deadline for Standard Registration: 15 January 2013

VIDEOTEXT





**Support Centre for Students with Special Needs
Masaryk University**

Šumavská 15, 602 00 Brno, Czech Republic

Tel.: 549491105

Fax: 549491120

E-mail: teiresias@muni.cz

www.teiresias.muni.cz